

# Nakekela News

Nakekela Christian Care Centre Association

## New Beginnings

In December 2010, the Nakekela Board and Management began the process of establishing a Voluntary Association. They did this by appointing an Executive Committee (acting as the board) who will meet every three months, and an Operational Committee (involved in the day-to-day running issues) that will meet every six weeks. We at Nakekela are also in the process of registering as a public benefit organization and as a non-government organization. Apart from this, we also opened our own bank account, which will allow us to be more aware of our finances. To help us do this, we are in the process of appointing our own book-keeper and auditor.

All of our staff were able to enjoy a break of a few weeks over Christmas. On the third of January we re-opened the clinic, spending the first week cleaning and preparing for the admission of new patients. The second week of op-

erations began with the admission of three patients, and in the third week the Home-based Care started up. Several new policies with regards to admissions were also discussed with our new staff members. We hope to have a website up and running in the near future as well. It will be updated regularly with news in and around the Center. The upkeep of the website (as well as that of the bi-monthly newsletter) has been dedicated to one of the volunteers from overseas. We are very thankful for this willingness, since it has been a dream and a prayer request of ours to be able to reach international communities, but we did not have the capacity until now.

As funds are limited, we have a very small group in our Home-based Care team, and are using staff already employed at Nakekela. Dr. Sonja Miskin, Sister Emma Masanabo (Staff Nurse), Dorcas Mathibela (Administrative Assistant), and Dori Averink

(Volunteer), go and visit and assess not only potential patients for Nakekela but also follow up those who have already been discharged. Prior to all of these changes, we were limited in our services due to the main focus having been on the MCDC beneficiaries. Now, however, (beginning with local churches and pastors) we hope to initiate relationships with other clinics, hospitals, community Home-based care teams, schools, and police stations. We wish to do this in order to educate the community about Nakekela and our services, as well as try and reduce the stigma surrounding the area of HIV/AIDS.

## February 2011

### Inside this issue:

From the Manager's Office	2
Doctor's Report	2
Counseling	2
Therapy	3
Introducing Our Staff	3
Prayer & Thanksgiving	4



A Strategic Planning session for 2011 with some staff members

## From the Manager's Office

By Babette Grobler

When we started this year, we only had R500.00, which was used to start up our two new bank accounts. On the third of January, 2011, I asked the Lord to give me a promise to hold onto. He gave me Isaiah 30:15a: "Come back and quietly trust in me. Then you will be strong and secure". By Friday, the 7<sup>th</sup> of January 2011, we received confirmation from donors that finances would be given so that we could continue with the services that needed to be rendered by Nakekela in 2011. We imme-

diately started with the admissions of patients, as there had been people waiting at our front door ever since the clinic opened on the 3<sup>rd</sup> of January! Even those who were ill were phoning themselves to request admission. All of this, at a Center whose early days were marked with people refusing to even enter the building, as they saw it as a place of death and did not want to be seen nearby (due to the stigma attached to HIV/AIDS)!

God has enabled us to build a relationship of trust with the community, and we dedicate this service to Him and give Him praise for enabling us to continue with His work. He provided for us, even when we thought we might have to close down in 2011. All praise to Him!

## Doctor's Report

By Dr. Sonja Miskin

After a very tumultuous and uncertain 2010, Nakekela opened early in January, trusting our Lord to supply for all our needs. We were greatly encouraged by Isaiah 30:15.

Within the first two weeks of 2011 we admitted a total of 18 patients. However, it is with great sadness that we say that

**It seems to me as if we are again finding many of the sickest people as was our experience in the early years..."**

we have already lost nine of those patients. It seems to me that we are again finding some of the sickest people that we

have in a long time, as sick as they were in the early years (2005-2006). These were the years that preceded widespread availability of ARV medication (this is the standard treatment for HIV) in government hospitals and clinics.

## Counseling / Therapy

By Riana Hattingh

Effective counseling in a time of HIV/AIDS goes hand in hand with listening in love. Most of the patients that arrive here at Nakekela are full of anger, resentment, bitterness, fear, suspicion, self-stigmatization, loneliness, frustration, blame and rejection. This dark cloud that hangs over them brings thoughts with no hope, no future, and no

more joy: in short, of love and peace gone forever. The only thing they are now sure of is the necessity of facing death.

At this point, there is something inside of me that wants to reach out to these individuals with the love of Jesus Christ. Listening and providing counseling with the love of Jesus, as well as reaching out in prayer, is part of

my ministry. By bringing hope and peace through listening, love, therapy, and creative art, I pray that the awareness of our Triune God – Father, Son, and Holy Spirit – will flow, with His healing, to them through me. In the next newsletter, look for stories of God's grace at work in this way!



Art Therapy Classes with Mrs. Riana Hattingh



The Nakekela 'bakkie' receiving a boost from a local man after finding the battery flat

## Introducing Our Staff

Anna Jiyane began working at Nakekela in 2005 after Joke Paare, the former manager, asked her to join the team. At that time, she was working in Pretoria where she had also Anna lives in Tweefontein F, with her young son and younger sister. She goes to church every Sunday at the Christian Believers Congregation of South Africa. At Nakekela, she is one of

tients. She also enjoys socializing with other people, especially with international visitors. Learning their culture and lifestyle, as well as teaching her culture to others, is beneficial to widening her knowledge about the people of this world. One amazing thing about Anna is that she is studying part-time through UNISA (University of South Africa) in the Social Workers program. She hopes to complete her courses within the next two years, and is thankful for the support of Nakekela with her studies.

“My dream is to graduate from UNISA, be a qualified Social Worker, and have a big family with many adopted children”.



Anna Jiyane

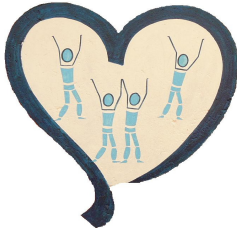
**“My dream is to graduate from UNISA, be a qualified Social Worker, and have a big family with any adopted children.”**

the team of Cooks and Cleaners. She enjoys preparing healthy, well-balanced meals for the pa-

## Nakekela Christian Care Centre Association

P O Box 20400  
Stand 121 & 122  
Tweefontein G  
KwaMhlanga MP 1022

Tel: +27 13 945 6861  
Fax: +27 13 945 6861  
Cell: +27 82 572 0845  
Email: bgrobler78@gmail.com



Striving to be the hands and feet  
of Lord Jesus in the community

We will soon be on the  
Web! Watch this  
space!!

*Nakekela Christian Care Centre Association is a public non-profit step-down facility established for terminally ill patients with HIV/AIDS in the greater KwaNdebele area.*

***Mission:*** *To render palliative and curative care in a holistic manner to both in- and out- patients in the KwaMhlanga Community whose lives are impacted by HIV/AIDS.*

***Vision:*** *To work in collaboration with local communities including churches, schools government structures and other community institutions and stakeholders to further its main objective (as stated in the mission)*



Care workers chatting with a patients while on break



Dudu celebrating her birthday with cake while staying at Nakekela

## Prayer & Thanksgiving

We thank God for all the people, from many different countries, who came to visit us at Nakekela in the past several months:

January 26: Hennie & Annelies Carelsen (Australia)

January 28: Ed Rettig (USA)

February 11 & 14: Arlene Klaassen, Jake Klaassen, Loreanne Klaassen, and Corney Les (Canada)

February 24: Shun Jinnai & Eisuke Kanda (Japan)

A special thanks goes to those who have contributed their time and effort to assist us in various tasks around the compound, and also for the monetary gifts that were given. These gifts were used to purchase new wheel chairs, to replace the old and broken ones, and also a stand which we use to place our water tank six feet above the ground.



Babette and Sister Emma joyful at receiving donations of medical supplies from Canada